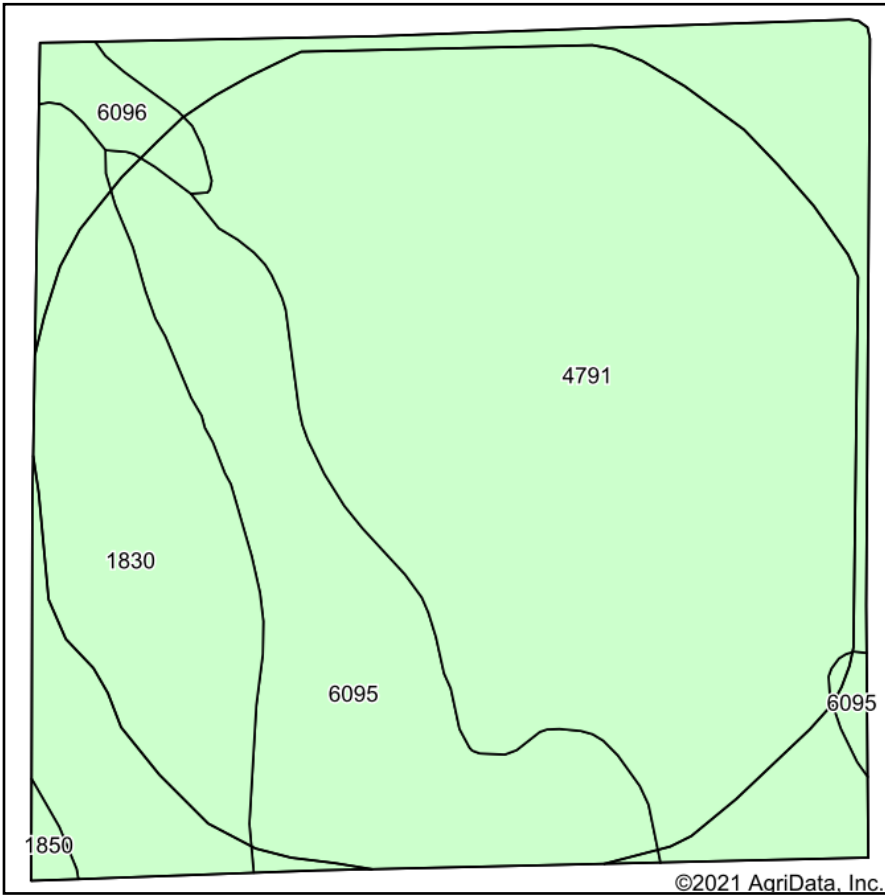
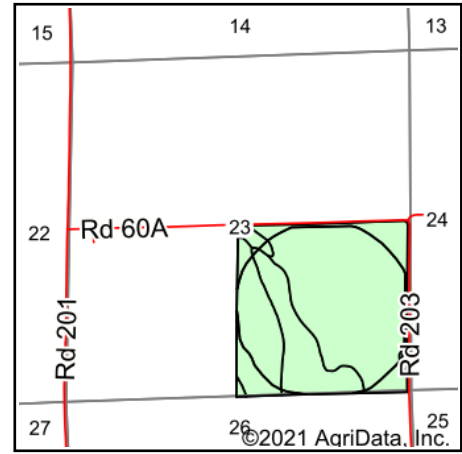


Soils Map



Soils data provided by USDA and NRCS.



State: **Nebraska**
 County: **Garden**
 Location: **23-17N-42W**
 Township: **Blue Creek**
 Acres: **159.8**
 Date: **3/24/2021**

KRAUPIE'S
 REAL ESTATE & AUCTIONEERS
 farmauction.net
 915 Main St • Bridgeport, NE 69336 • 308-262-1150

Maps Provided By:

surety[®]
 CUSTOMIZED ONLINE MAPPING
 © AgriData, Inc. 2021 www.AgriDataInc.com



Area Symbol: NE069, Soil Area Version: 19

Code	Soil Description	Acres	Percent of field	Non-Irr Class *c	Irr Class *c	Range Production (lbs/acre/yr)	SRPG	Corn Irrigated	Dry beans Irrigated	Winter wheat	*n NCCPI Soybeans
4791	Valentine fine sand, 3 to 9 percent slopes	97.60	61.1%	Vle	IVe	2374	22	85			19
6095	Sarben loamy fine sand, 3 to 6 percent slopes	29.38	18.4%	IVe	IIIe	2455	46	112	3	28	40
1830	Sulco-McConaughy loams, 9 to 30 percent slopes	29.37	18.4%	Vle		1707	38	8	2	2	29
6096	Sarben loamy fine sand, 6 to 9 percent slopes	2.83	1.8%	IVe	IIIe	2490	44	104		25	30
1850	Sulco-McConaughy complex, 3 to 6 percent slopes, eroded	0.62	0.4%	IVe	IIIe	1326	48	121		29	37
Weighted Average						2264.3	29.8	76.3	0.9	6.1	*n 25

*n: The aggregation method is "Weighted Average using all components"

*c: Using Capabilities Class Dominant Condition Aggregation Method

Soils data provided by USDA and NRCS.